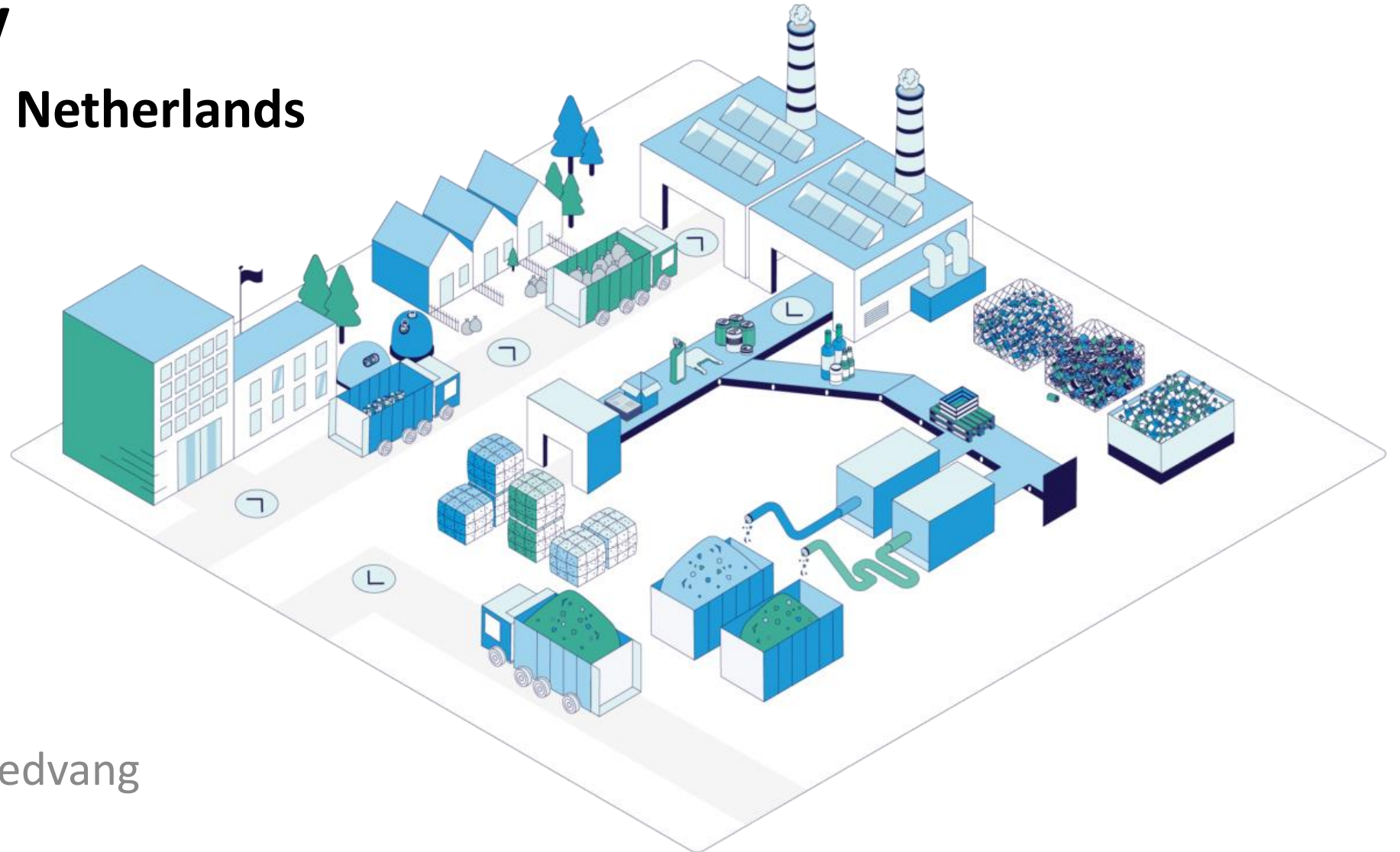


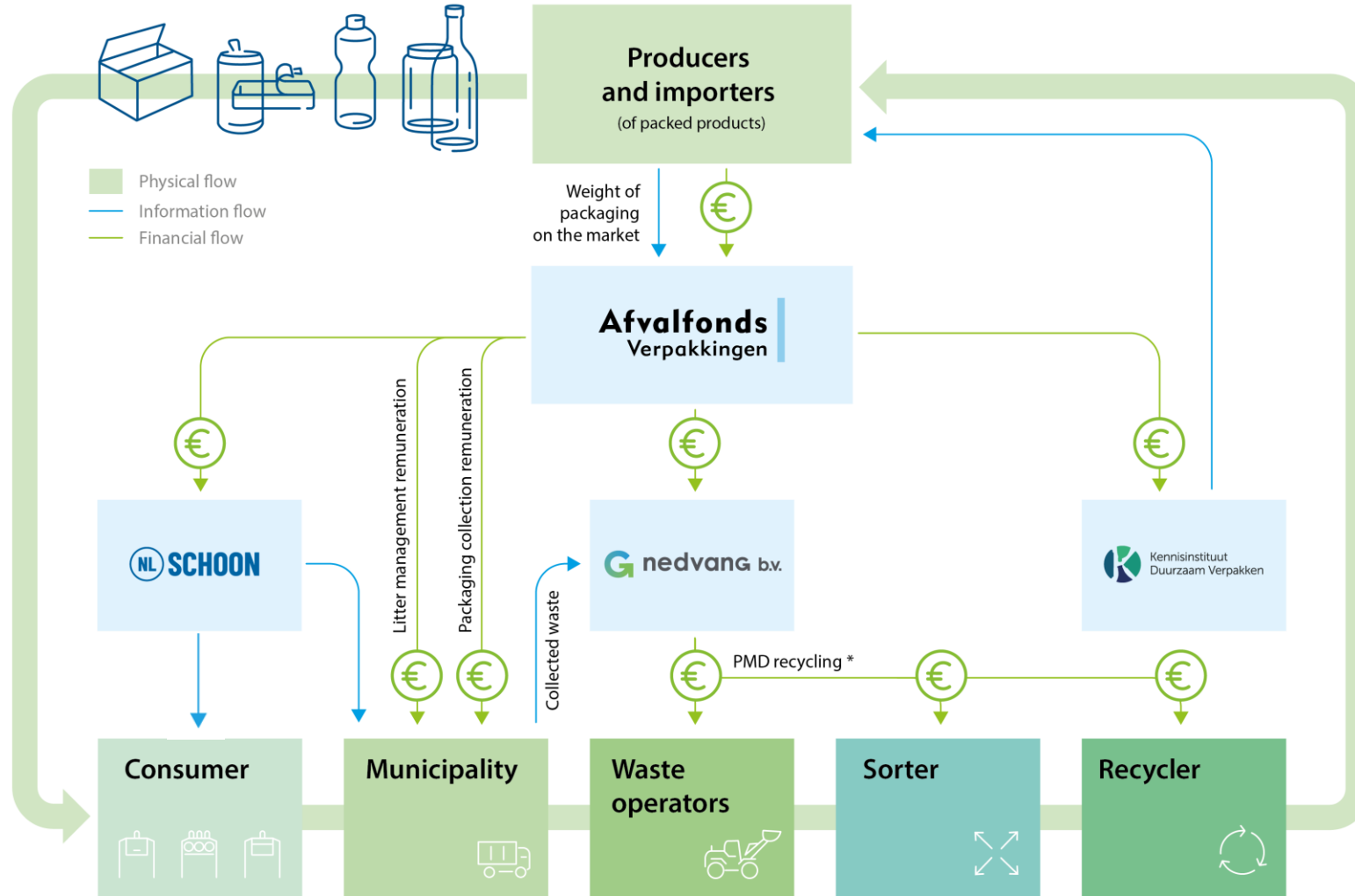
Webcast KIDV

EPR system in the Netherlands



Bianca Lambrechts
Managing Director Nedvang

EPR Scheme



* For the other materials, the EPR system only pays out a collection remuneration

Recycling results 2020

Material	Result 2019	Result 2020	EU recycling target 2020	Dutch recycling target 2020	Estimate result new measuring point*	Dutch recycling target 2025
Glass	88%	90%	60%	90%	74-80%	71%
Paper/cardboard	90%	90%	60%	75%	90%	85%
Plastics	54%	66%	22.5%	50%	46-52%	50%
Metals	95%	95%	50%	85%	86-90%	80%
Wood	69%	68%	15%	41%	68%	55%
Sum of all materials	80%	82%	55%	70%	76-78%	74%

Source: Afvalfonds Verpakkingen;
Monitoring Verpakkingen,
Resultaten inzameling en recycling 2020

* Based on several studies by the WUR

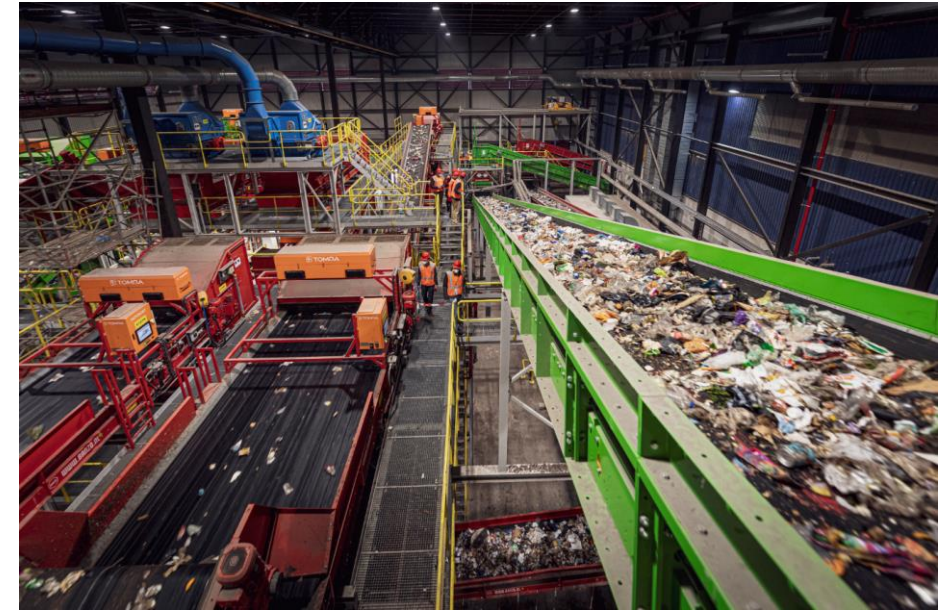
PMD collection systems

Separate collection (source)

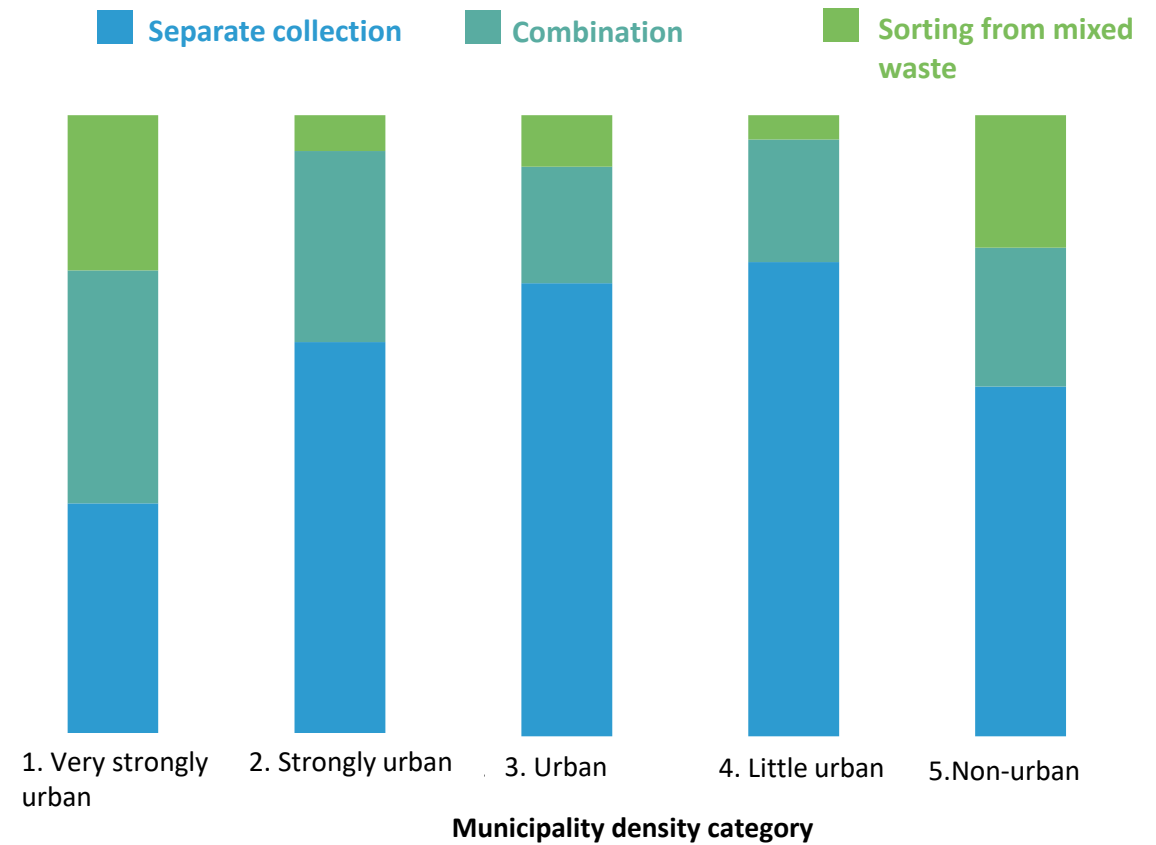
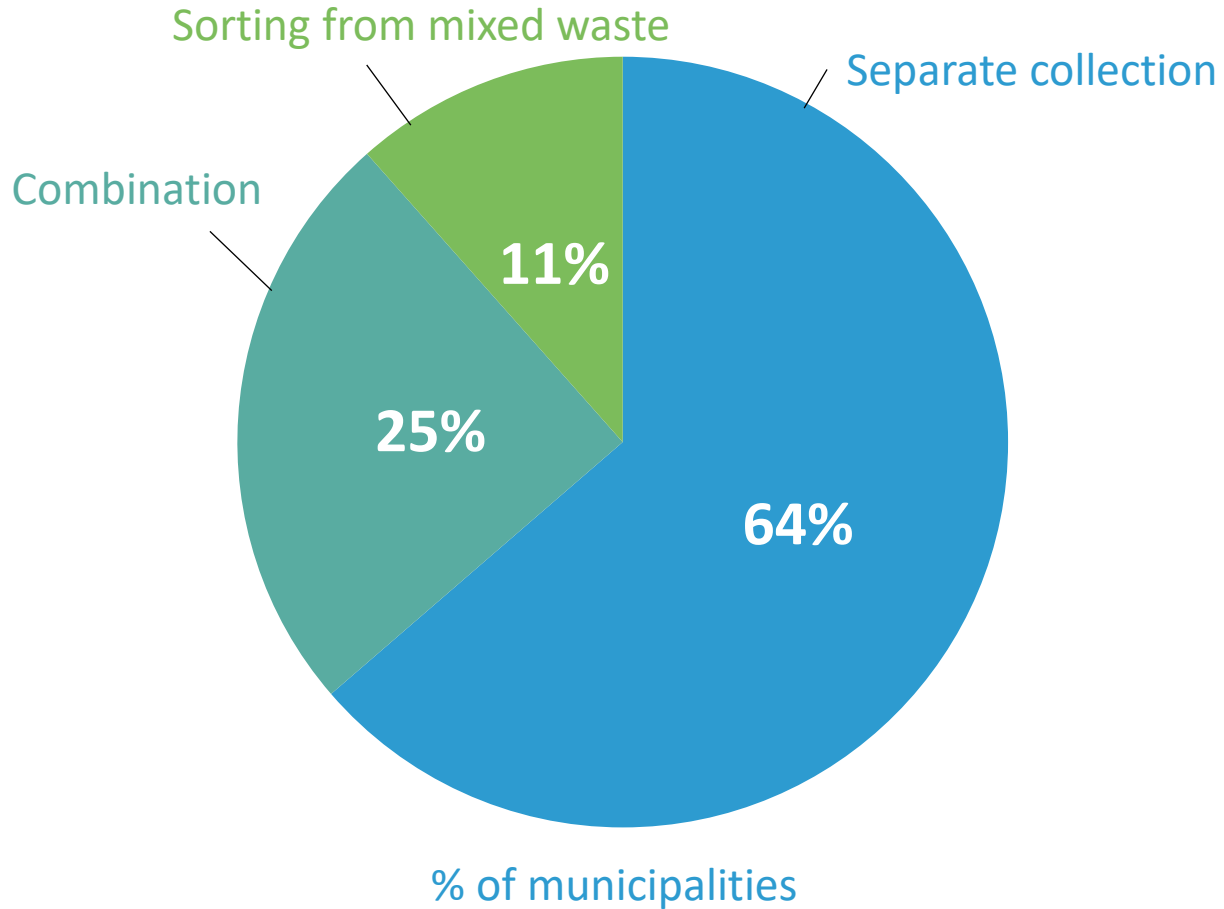
- ✓ Plastics, metals & drinks cartons are collected separately.
- ✓ Sorting-Installation.

Sorting from mixed waste (post-separation)

- ✓ Plastics, metals & drink cartons collected together with household residual waste.
- ✓ Sorted before incineration in the Waste to Energy (WtE) plant and subsequently recycled.



PMD collection systems



Collection systems

System	Impact on household residual waste				Impact on raw materials
	No extra motivator	Financial motivator	Physical motivator	Frequency motivator	Amounts collected
Basic	X				
Diftar		X			X
“Reversed collection” (bring your residual waste)			X		X
Low frequency collection				X	X



To reach the future recycling-targets ...

- 1 Rethink the need of packaging material
- 2 Use of recycled material
- 3 Standardize packaging where possible
- 4 Improve recyclability
- 5 Integrate deposit systems
- 6 Increase collection weight
- 7 Reduce impurities (source separation)
- 8 Optimize sorting
- 9 Optimize recycling
- 10 Innovate recycling

